

The Lighthouse Project

McCormick County School District

Home of the World Class Chiefs




Dr. Jaime Hembree

Superintendent of McCormick County Schools

A photograph of a lighthouse situated on a long pier extending into the ocean at dusk. The sky is a deep blue with light clouds. The lighthouse is white with a black base and a glowing lantern room. Two streetlights on the pier are illuminated, and their light reflects on the water's surface. The overall mood is serene and contemplative.

District Goals

- **Goal 1: Provide World Class Instruction to Increase Student Achievement**
- **Goal 2: Build World Class Leaders (Students and Staff)**
- **Goal 3: Provide World-Class Opportunities for ALL Students**
- **Goal 4: World-Class Communication and Partnerships**
- **Goal 5: Continue to Grow a World-Class Team**



Learning Targets

You will be able to:

#1

Gain a better understanding of our schools/district.

#2

Discuss implementation of personalized learning.

#3

Obtain useful resources to implement personalized learning in your school/district

Lighthouse Design Team

[Click here to meet the team](#)




Audience Poll

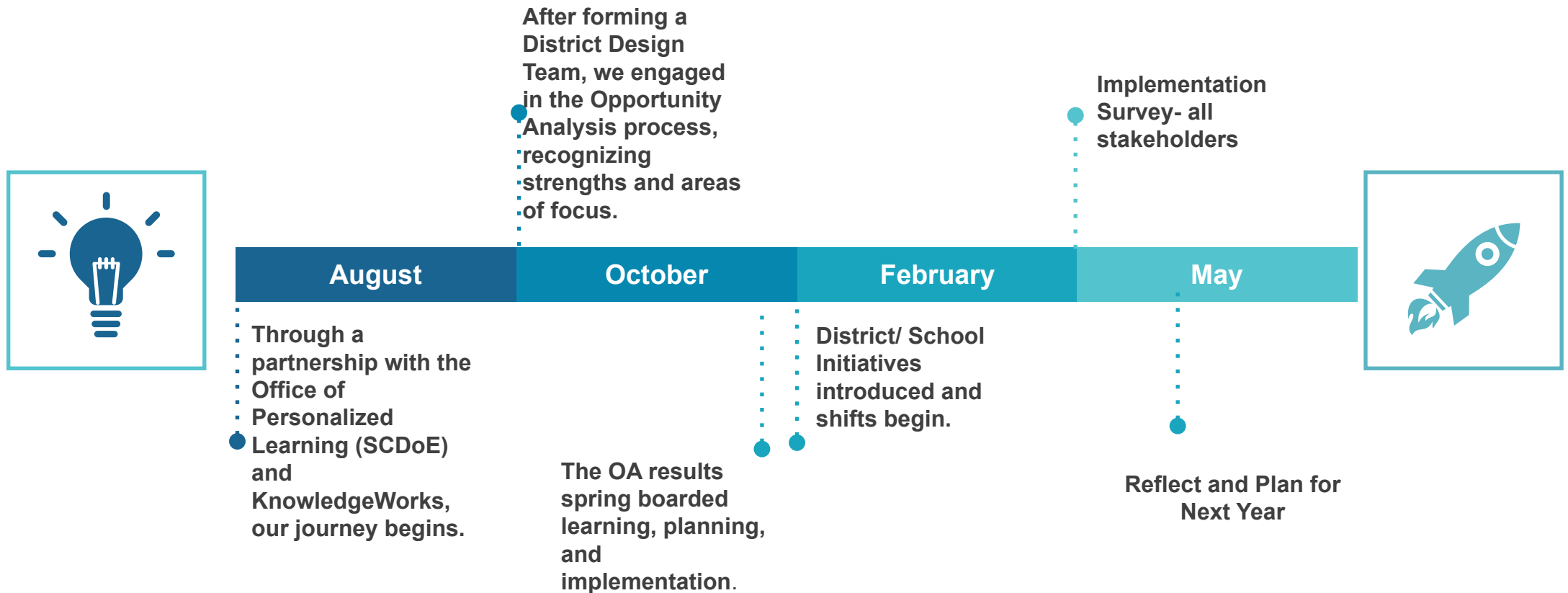
Go to **sendsteps.me** and log in with

Free86916

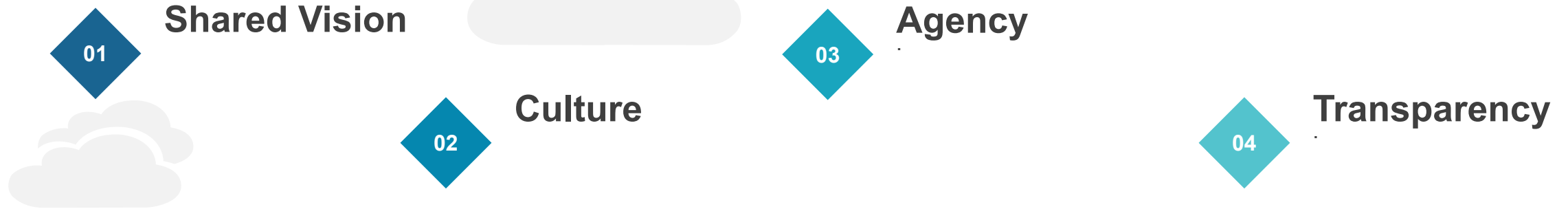


Or scan  the QR-code

Timeline of Transformation



District Conditions to Scale and Spread Personalize Competency Based Learning



Partnerships

Flexible Learning
Environments

Learner Supports

Curriculum

Instruction

Comprehensive
Assessment
Systems

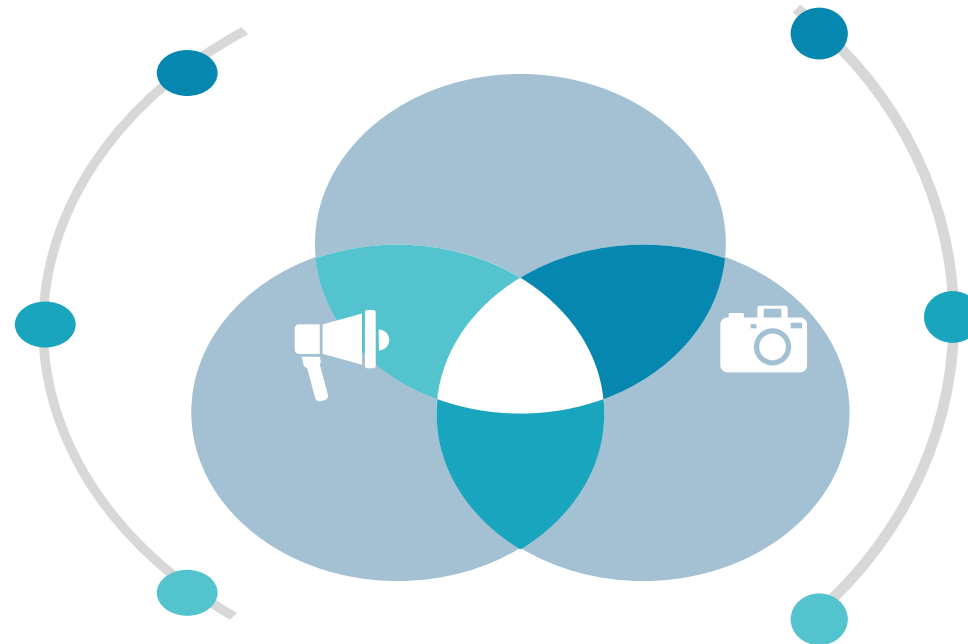
Professional
Development and
Learning

Leadership
Development

McCormick County School District



SC Lighthouse District Opportunity Analysis Guide



[Click Here](#)

Turn and Talk

Discuss possible evidence of PCBs in your school/district.

Use QR Code To Share



District Initiatives

VISION

Inspiring, challenging and preparing our students for tomorrow's global opportunities. .

MISSION

Provide a quality education for every student .



Shared Vision

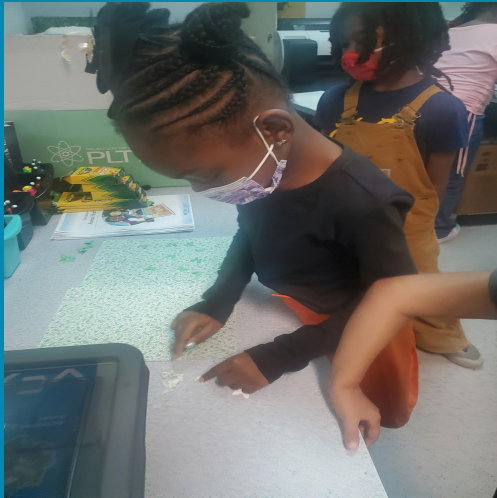


Culture

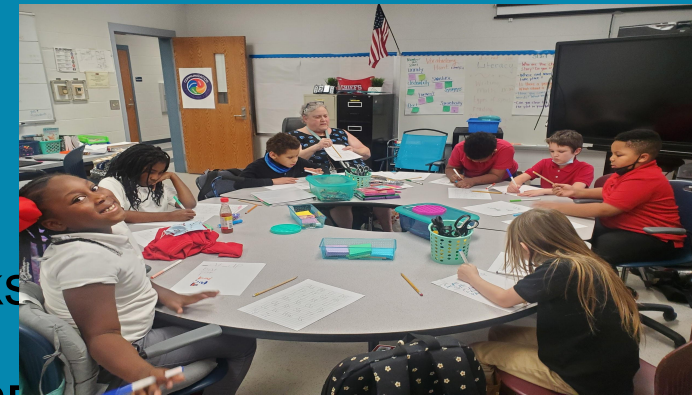


Agency

McCormick Elementary School



- Early Learning Center
- Academic Acceleration Class
- Multi Tiered Systems of Support (MTSS)
- Flexible Grouping
- Morning Meetings
- PBIS
- After School Academy
- Intervention
- Lucy Calkins Writing Works
- Project Lead the Way
- Project Based Learning (PBL)





McCormick
Elementary
School

PCBL

Journey

McCormick Middle School



- Multi-Tiered Systems of Support (MTSS)
- AVID (Advancement Via Individual Determination)
- Real time Intervention
- Personalized Learning
- Lucy Calkins Writing Workshop
- Odysseyware
- 1:1 Initiative
- PBL



McCormick High School



- AVID (Advancement Via Individual Determination)
- Personalized Learning
- JAG (Jobs for America's Graduate)
- Dual Enrollment Programs
- CATE (Career and Technology Education)
- Broadcasting Studio (Chiefs Media Crew)
- Project Based Learning (PBL)

JAG students were able to complete a year-long service project of collecting pop tabs by touring the Ronald McDonald House Charities at Augusta University Medical Center. JAG students collected over 37,000 tabs, which will help families of patients hospitalized at The Children's Hospital of Georgia. Great Job, McCormick Jagsters!



MMS & MHS

"World Class CHIEFS!"

Performance Tasks

***McCormick Middle School
&
McCormick High School***

[Presentation link](#)

[Video Link](#)

SOUTH CAROLINA

PERSONALIZED COMPETENCY-BASED LEARNING
IMPLEMENTATION SURVEY DATA: MARCH 2022

MCCORMICK COUNTY SCHOOL DISTRICT

DATA PARTNERSHIP CONVERSATIONS APRIL 2022

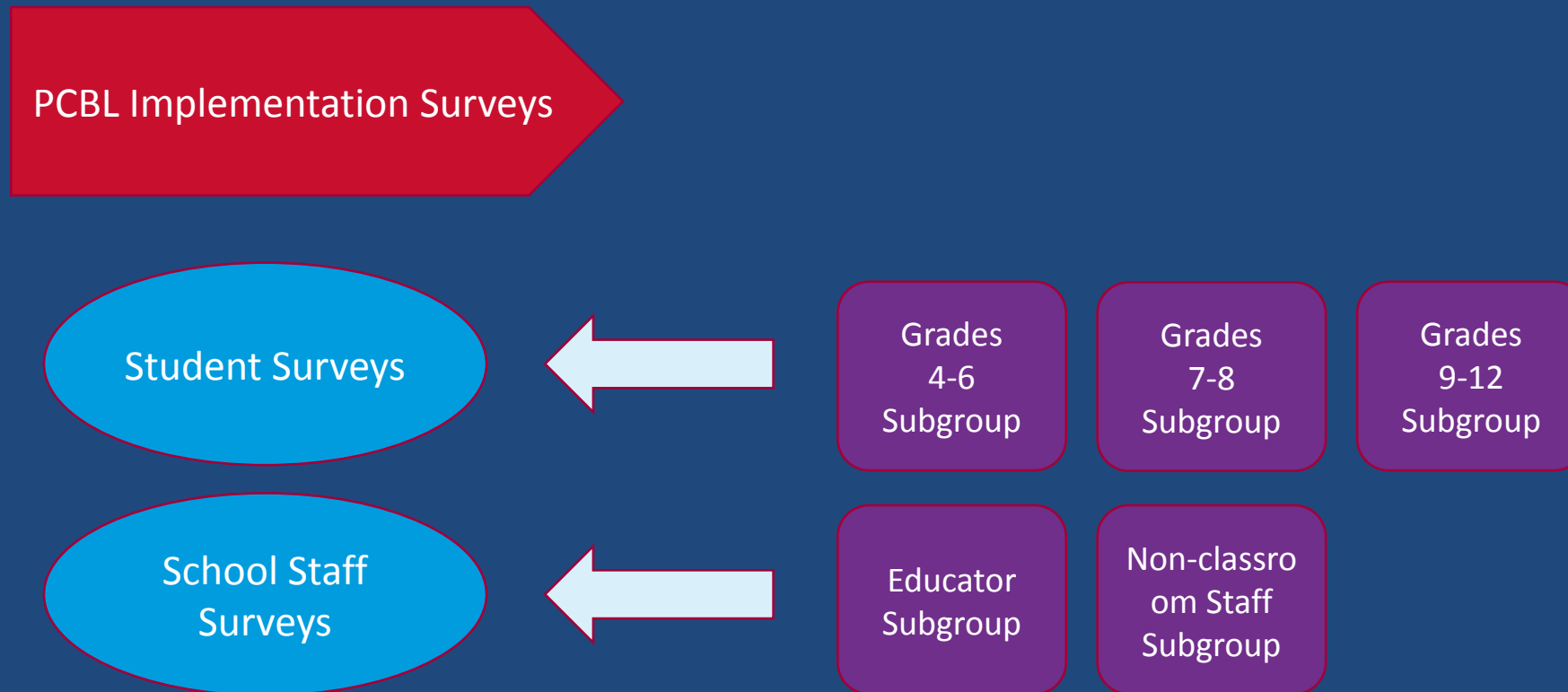



KnowledgeWorks®

Why collect this data?

- At its most basic, our State Impact Assessment (SIA) approach is to ask:
 - What was done and where?
 - Was it good?
 - What outcomes and impact did it have?
- As part of the data partnership process, the data collection is meant to create, establish, and maintain the continuous improvement process occurring at the district and cohort levels and to provide evidence of progress.
- As we pursue data equity best practices, we are embracing data and analytics approaches that foreground equity, especially in surfacing evidence that highlight the profile, context, present situation, and progress of historically marginalized populations.

Looking at the collected data – whose perspective?



Looking at the collected data – survey responses

McCormick County School District South Carolina PCBL Implementation Survey Responses

Students	
Grades 4-6	130
Grades 7-8	90
Grades 9-12	47
TOTAL	267

Staff	
Classroom teacher, special education teacher, or subject matter teacher	28
Counselor, social worker, or school psychologist	4
District-level administrator	2
Other certified staff	5
Other front office staff	4
Paraprofessional or classroom aide	9
School-level administrator	3
Specialist teacher such as art, music, phys. ed., CTE, theater, foreign language	4
TOTAL	59

Looking at the collected data – aligning to District Conditions Outcomes

Outcomes on District Conditions

- Shared Vision
- Culture
- Transparency
- Agency
- Partnerships
- Curriculum
- Instruction
- Comprehensive Assessment Systems
- Flexible Learning Environments
- Learner Supports
- Professional Development & Learning
- Leadership Development

Focus on: AGENCY

Consisting of the following survey measures:

- I can choose to show my learning in different ways such as through reading, worksheets, hands-on activities, or projects.
- I know what I'm good at and where I need to grow academically.
- I regularly engage students in goal setting.
- I regularly get student feedback to adjust my teaching.
- I set written goals for my learning.
- My teacher asked my classmates and me to help make our classroom rules and protocols.
- Our students exhibit independence as learners.
- Students have choices about how they want to learn.

Sense-making and Decision-making Tools

Guiding Questions

- What are the survey results telling me?
- What trends am I observing from my analysis?
- Are the results of the analysis surprising or unsurprising? How so?
- What possible causes(s) do I think might have led to the results?
- How can I use the collected data to set goals, continuously improve, and make decisions?
- How can I use the survey results to surface the stories of historically-marginalized learners and to help move the needle in closing opportunity gaps?



- ✓ Strengths Based Approach
- ✓ Data/ Evidence
- ✓ Team Approach
- ✓ Presentation/
Implementation Plan
- ✓ Reflect
- ✓ Monitor and Adjust

Contact Information

Pamela Turman- Chief Academic Officer

turmanp@mccormick.k12.sc.us

Angela White- McCormick Elementary School Principal

whitea@mccormick.k12.sc.us

Dr. Whitney Koeppen- McCormick Middle School Principal

koeppenw@mccormick.k12.sc.us

Gena Wideman- McCormick High School Principal

widemang@mccormick.k12.sc.us



THANK YOU